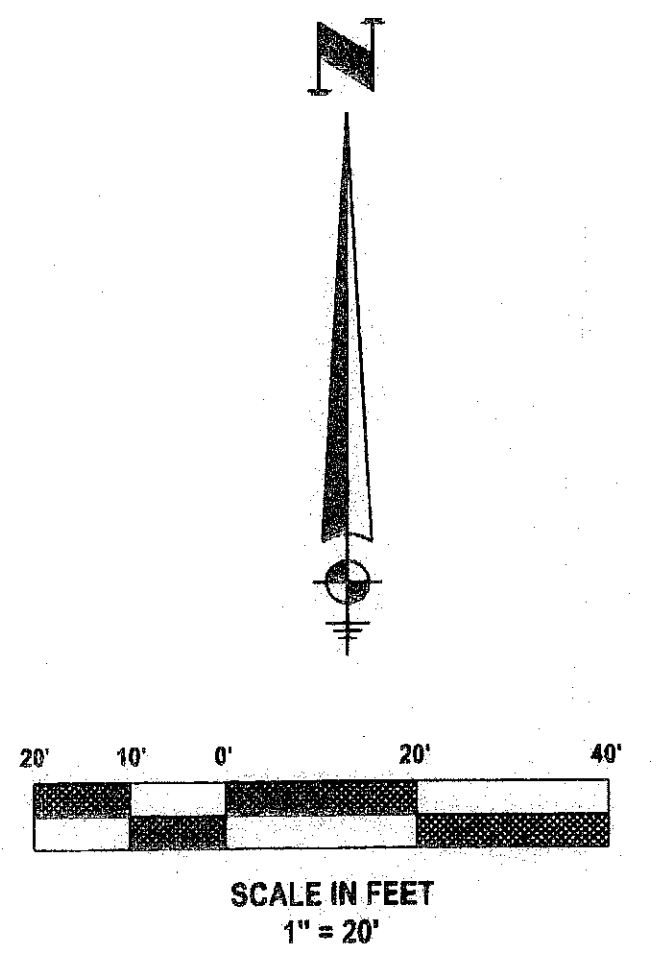
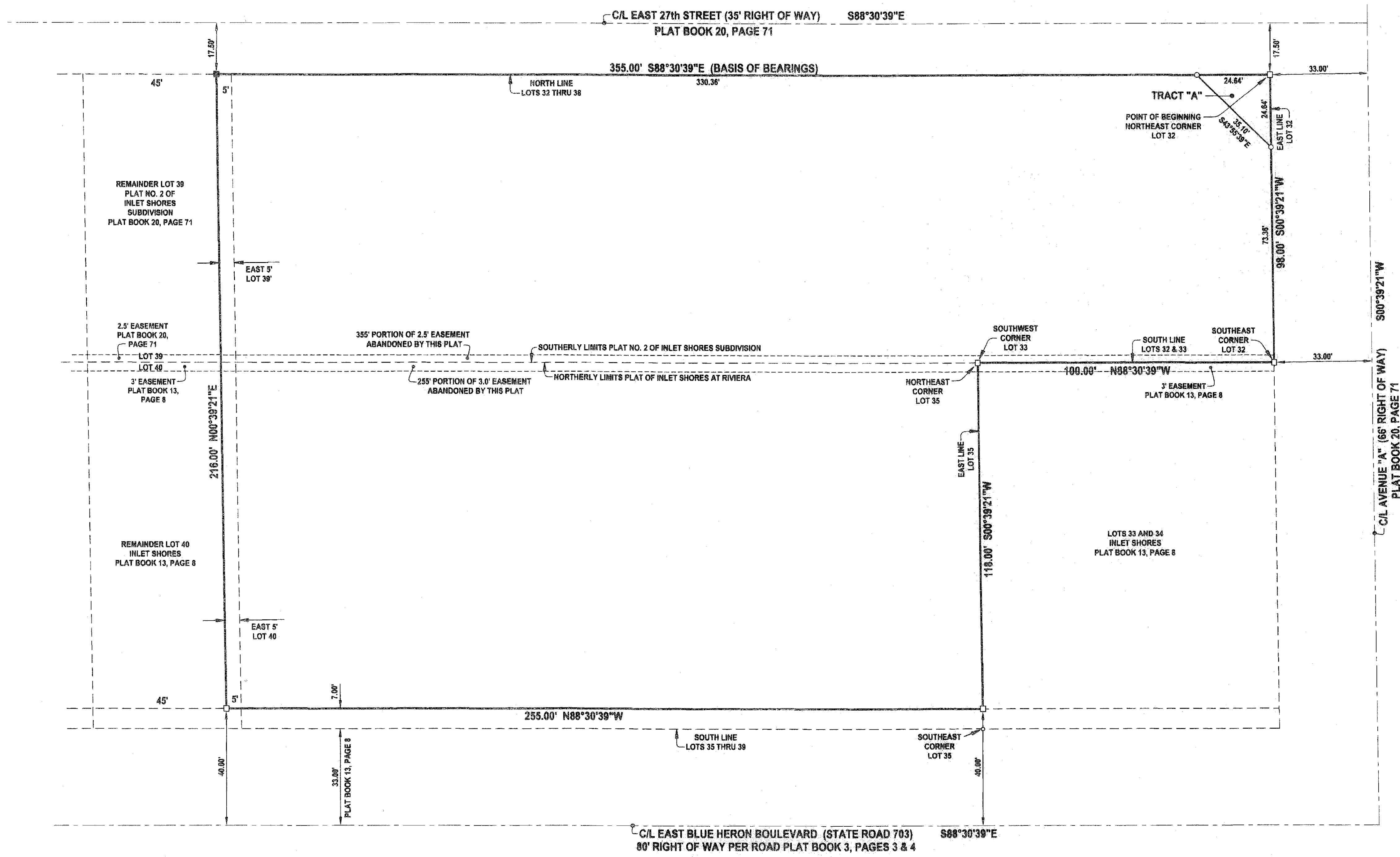


PUBLIX AT RIVIERA BEACH

A REPLAT OF ALL OF LOTS 35, 36, 37, 38, 39 AND EAST 5 FEET OF Lot 40, INLET SHORES, PLAT BOOK 13, PAGE 8 AND ALL OF LOTS 32, 33, 34, 35, 36, 37, 38 AND EAST 5 FEET OF LOT 39, PLAT NO. 2 OF INLET SHORES SUBDIVISION, PLAT BOOK 20, PAGE 71, IN SECTION 28, TOWNSHIP 42 SOUTH, RANGE 43 EAST, CITY OF RIVIERA BEACH, PALM BEACH COUNTY, FLORIDA.

SHEET 2 OF 2



THIS INSTRUMENT WAS PREPARED BY DONALD D. DANIELS IN THE OFFICES OF DONALD D. DANIELS, INC.

<p>DONALD D. DANIELS, INC. CONSULTING SURVEYORS & MAPPERS Florida Certificate LB No. 4165 725 North A1A, Suite C-111 Jupiter, Florida 33477 Telephone: (561) 747-9864 Fax: (561) 747-9895</p>	PUBLIX AT RIVIERA BEACH		SCALE: 1"=20'
	REFERENCE: 2071 & 1378	REVISIONS:	DWG. NUMBER: 08-023.1
	OFFICE: DAO	CHECKED:	SHEET 2 OF 2